

SAP Implementation.



Connecting the extended
enterprise

Business transformation touches all elements of the enterprise,

evolving the organization bogged down by business as usual into an agile entity that is robust and resilient - an intelligent, visually managed, and connected enterprise adaptive to changing requirements and environments.

Monitor, control, and adapt

A digitally transformed enterprise reduces planning and production cycle times, inventory levels, and increases service quality. The connected business is networked with suppliers, customers, and outsourced/offshore partners for better calibration of supply with demand, optimizing supply chain efficiency, and lowering costs.

Connecting production systems and assets with manufacturing processes reduces associated costs and increases asset availability. Connected enterprises have real-time visibility across multiple suppliers, locations, sensors, and machines, allowing them to better measure and control production from prototype all the way through to final assembly, distribution, and warehousing. Thanks to efficiencies created through the application of digital technologies such as the Internet of Things, 3D printing, artificial intelligence, and machine learning, digital transformation of the supply chain affords the enterprise flexibility, scalability, ease of deployment, and cost-containment.

Enabling this transformation is the SAP HANA platform.

Accelerate production, improve quality, and reduce costs

In a lean organization, all elements across Automation the extended enterprise are connected and continuously communicate status and exceptions, delivering the right information at the right time to the right device to empower supervisors, Mobile Big Data and line employees with information to intercede and keep the process flowing. Sensor data and analytics provide the basis for early warning systems and Analytics Cloud production reliability.

Production dashboards provide simulations, recommendations, and predictions that minimize material flow deviations and stabilize production. And all of it is digitally stitched together in a wireless fabric that covers the entire organization.



Mobile



Analytics



Cloud



Automation



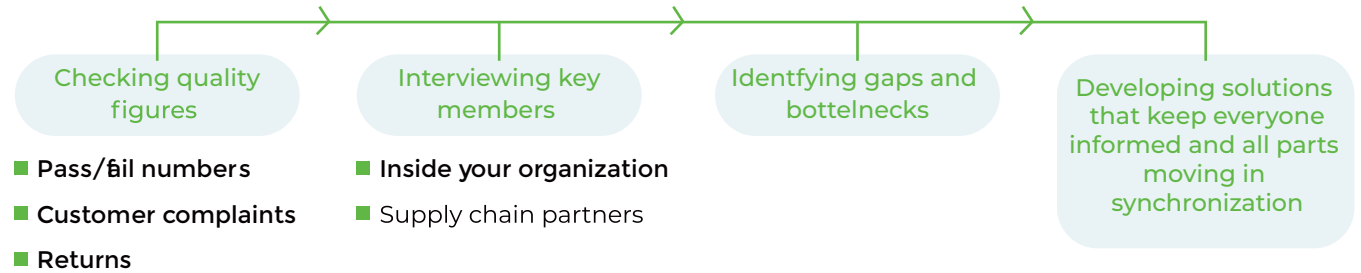
IoT



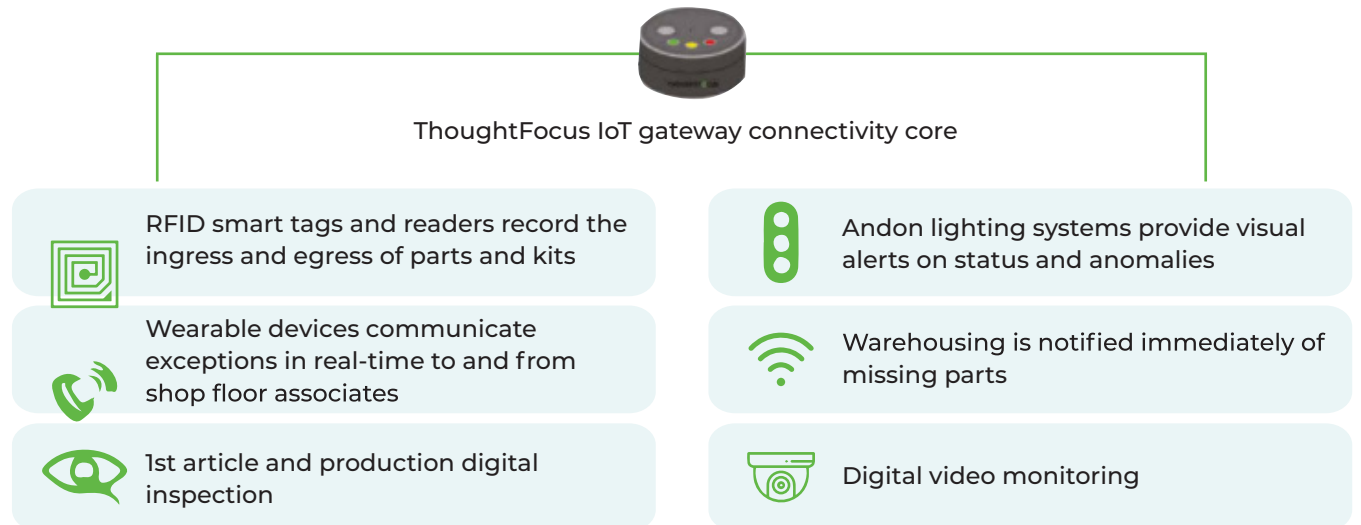
Reduced costs

ThoughtFocus gets you from there to here

First, we begin by analyzing the operation and all the process steps



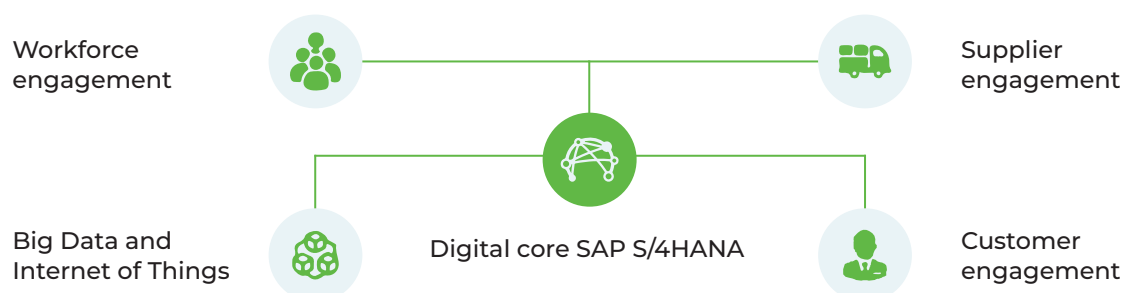
Digital connections drive the enterprise of the future



Awareness, alerts, control – the technologies behind Just In Time

ThoughtFocus' IoT Gateway employs a variety of efficiency technologies to transform your business into a fully connected enterprise. RFID smart tags, barcode readers, environmental sensors, access control, visual controls, and management, video, wearable devices, Andon lighting, sensor fusion, ZigBee, Wi-Fi, connectivity to the Internet of Things ... all these technological advances assist in providing real-time data to power predictive analytics and self-learning. The fusion of these technologies helps capture and process information on the environment, people, machines, and process - assessing status, location, actions, and exceptions to enable a smart system that informs, alerts, coordinates, and connects all process stakeholders.

Enhanced data management, analytics, and app development accelerates innovation



Whether you are employing legacy systems, migrating to SAP HANA or deploying a new ERP platform, ThoughtFocus' Enterprise Network Innovations team provides both in-depth S/4HANA support as well as custom solutions that integrate equipment and product data throughout the enterprise.

Experience

Our expertise in SAP spans the entire aerospace value chain, introducing digital technologies for predictive analytics, self-learning, artificial intelligence, automation, and hyper-connectivity to:

- Streamline product development
- Visually control assembly
- Enable just-in-time distribution
- Automate transactions and processes
- Improve supplier collaboration power
- Optimize warehousing
- Enhance distribution

The resulting transformation allows all stakeholders in the aerospace ecosphere - developers, manufacturers, service providers, supply chain partners, MROs, and asset owners - to dramatically improve efficiency, enhance customer service, and increase revenue.

ThoughtFocus is your technology partner, able to integrate and implement digital technologies that truly transform your business.

About us



ThoughtFocus helps forward-looking companies and organizations in the financial services, manufacturing, and higher education/public services sectors innovate and achieve a better future faster. ThoughtFocus' innovative and cutting-edge technology solutions enable its customers to deploy new capabilities faster, deliver better user experiences, and drive operating efficiencies. We do this through executional excellence and mitigating the risk of change. With headquarters in the U.S., the Company has more than 2,100 employees in locations spread across five countries.

For more information, please visit the company website www.thoughtfocus.com.

