

## Accelerate EMV certification

TCube comprises a complete suite of transaction test tools, designed to accelerate certification of magnetic stripe reader (MSR) test cases. Automating testing end to end, TCube simulates processor integrations and transaction processing across diverse payment brands and devices. Achieving new levels of speed, transparency, and accuracy, TCube dramatically reduces testing effort – from days or weeks to just minutes or hours. EMV certification is achieved faster – at reduced cost and higher value.



**Fully automate MSR testing and validation**



**Execute hundreds of test cases per hour**



**Minimize / eliminate unnecessary iterations**



**Accelerate certification and solution deployment**

## FEATURES

- Q Automated analysis, execution, and validation of hundreds of test cases per hour
- Q Digital simulation of test cards, generating MSR tracking data
- Q Transparent categorization of test cases by card brand, industry, and transaction type (four-level tree view)
- Q Clear identification of the root causes of test failures and guidance on how to fix
- Q Detailed reporting on test execution with export options to MS Excel
- Q Full documentation of test cases, including procedures and expected results
- Q Convenient test recovery capabilities

## BENEFITS



**Streamline certification processes** with acquirer processors.



**Increase testing accuracy** and eliminate iterations.



**Reduce development effort** and associated costs.



**Achieve certification** with fewer execution cycles.

# 500+

test cases executed per hour

# 95%

reduction in manual testing time

# 60%

reduction in testing costs

## USE CASE

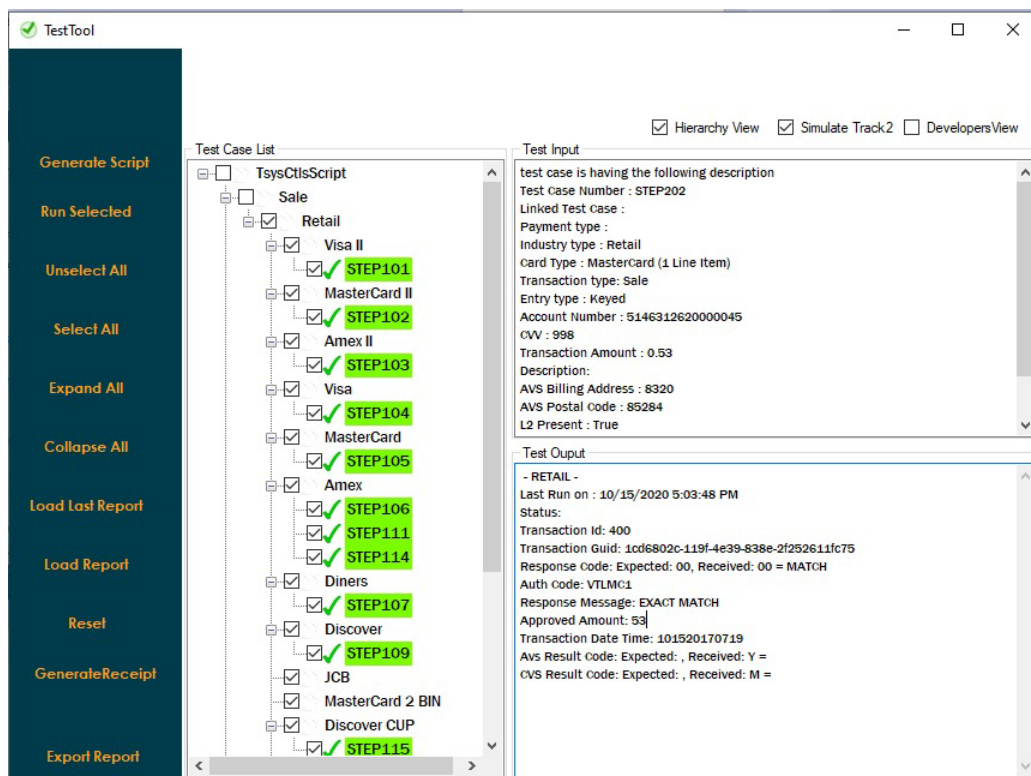


### Any organization implementing a payments solution

Whether you're a PSP, processor, retailer, or hardware manufacturer, you can leverage TCube to fast-track certification. Rapidly test and validate diverse processor integrations to save costs and accelerate time to value.

## ADDITIONAL INFO

- Windows-based desktop application
- Converts spreadsheet format into test script files (CSV)
- Simulates Track 2 data
- Automatically interprets processor responses



## ABOUT THOUGHTFOCUS

ThoughtFocus helps forward-looking companies innovate. We are driven by a single mission – to help our clients achieve a better future faster. Our cutting-edge solutions bring together industry expertise, technology acumen, and digital operations – custom designed to drive quantum change in your business. ThoughtFocus is a US-based privately held company, funded by Blackstone.

[www.thoughtfocus.com](http://www.thoughtfocus.com)

✉ [info@thoughtfocus.com](mailto:info@thoughtfocus.com)

☎ +14142143100

🌐 [thoughtfocus.com](http://thoughtfocus.com)